



*Instruction Manual*

**ACT-1B Series  
Panel Tachometers**



15 Columbia Drive

Amherst, NH 03031 USA

Phone: (603) 883-3390 • Fax: (603) 886-3300

E-mail: [support@monarchinstrument.com](mailto:support@monarchinstrument.com)

Website: [www.monarchinstrument.com](http://www.monarchinstrument.com)



## SAFEGUARDS AND PRECAUTIONS



1. Read and follow all instructions in this manual carefully, and retain this manual for future reference.
2. Do not use this instrument in any manner inconsistent with these operating instructions or under any conditions that exceed the environmental specifications stated.
3. Be sure the power supplied to this instrument matches the specification indicated on the rear panel on the instrument.
4. Be sure all power is removed before making or removing any connections to or from this instrument.
5. This instrument is not user serviceable. For technical assistance, contact the sales organization from which you purchased the product.



To comply with worldwide regulations such as the U.S. Environmental Protection Agency Resource Conservation and Recovery Act (RCRA) and EU Directive 2012/19/EU on Waste Electrical and Electronic Equipment (WEEE), you must not discard this electrical/electronic product in domestic household waste. The electronic components in this device may contain environmentally harmful substances. DO NOT DISPOSE of this product as unsorted municipal waste. This product needs to be RECYCLED and disposed of in accordance with environmental regulations in the country of use; contact your local authorities for more information. This product may be returnable to your distributor for recycling; contact the distributor for details.

---

Monarch Instrument's Limited Warranty applies.

See [www.monarchinstrument.com](http://www.monarchinstrument.com) for details.

Warranty Registration and Extended Warranty Coverage information is available online at [www.monarchinstrument.com](http://www.monarchinstrument.com).

Monarch Instrument holds the following US trademarks and registrations, all rights reserved: illumiNova®, Nova-Pro®, Nova-Strobe™, DataChart™, and Track-It™.

Windows and Excel are trademarks or registered trademarks of Microsoft Corporation in the United States and/or other countries.

---

## TABLE OF CONTENTS:

1.0 OVERVIEW .....	1
2.0 INSTALLATION AND POWER.....	1
2.1 Installation.....	2
2.2 Power .....	2
2.3 USB Programming Cable and Software .....	3
3.0 SENSOR CONNECTIONS .....	3
4.0 OUTPUT OPTIONS .....	4
4.1 Current Output Option (IO).....	5
4.2 Analog Output Option (AO).....	6
4.3 Pulse Repeater Output Option (PO) .....	6
5.0 SPECIFICATIONS .....	7
6.0 OPTIONS.....	8
7.0 ACCESSORIES.....	9
APPENDIX A - Serial Programming Commands.....	11

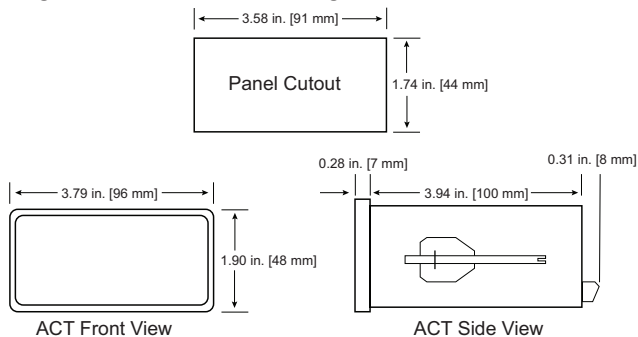
## 1.0 OVERVIEW

The ACT-1B is an economical and easy-to-use digital tachometer that displays rotational speed directly in RPM or RPS on a 5-digit red 0.56" high LED display using a speed sensor providing a single (or multiple) pulse(s) per revolution. The number of pulses per rev is factory set at time of ordering and can be user programmed from 1 to 999 using the optional USB Programming Cable and PM Remote Software. Power may be either universal 100 to 240 Vac (50/60Hz), or optionally, 12 Vdc or 24 Vdc isolated. The ACT-1B accepts input signals from optical, proximity, magnetic, infrared or laser sensors, or direct TTL or external ac inputs. The ACT-1B is suitable for panel mounting or benchtop use with convenient screw terminal connections on the rear panel of the instrument.

If specified at time of order placement, the ACT-1B may be equipped with either an optional 4 to 20 mA current output (IO) or 0 to 5 Vdc analog output (AO) proportional to speed, and/or a TTL pulse repeater output (PO).

## 2.0 INSTALLATION AND POWER

The ACT-1B enclosure is a standard 1/8 DIN size requiring a 3.58" wide by 1.74" high [91 mm x 44 mm] mounting hole.



**Figure 1 Dimensions in inches [mm]**

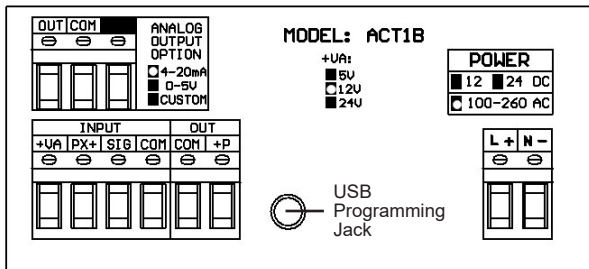
## 2.1 Installation

Remove the mounting clips (if fitted) and install the unit into the panel from the front. From the rear of the unit, install the mounting clips on each side and tighten the mounting screws against the rear of the panel.

 **WARNING: Do not over tighten the mounting screws.**

## 2.2 Power

Power to the unit is connected to the terminals under the section labeled POWER on the rear panel. Be sure the power supplied matches the specification indicated on the rear panel. Refer to Figure 2 below.



*Figure 2 ACT-1B Rear Panel*

If the unit is **AC powered** (100-240 Vac), connect the live (hot) wire to the terminal marked **L+** and Neutral (Return) wire to the terminal marked **N-**.

If the unit is **DC powered**, connect the DC supply Positive to the terminal marked **L+** and the DC supply Negative or Common to the terminal marked **N-**.

### 2.3 USB Programming Cable and Software

The 3.5 mm connection “hole” in the center bottom of the rear panel is for the optional USB Programming Cable (PN 6180-031), which works with Monarch’s Windows compatible PM (Panel Meter) Remote Software. The cable and software combination allows the user to configure the following: operation mode, analog output scaling, decimal places, display update rate and pulses per input. The user can also view real-time data in digital format and/or through Excel. Software instructions are included with the software downloaded from [monarchinstrument.com](http://monarchinstrument.com).

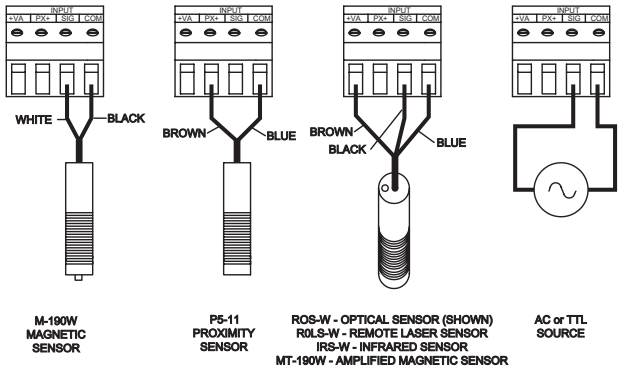
### 3.0 SENSOR CONNECTIONS

A speed sensor (not included) is connected to the terminals under the section labeled INPUT on the rear panel. Refer to Figures 2 and 3.

Connections and their functions are as follows:

- +VA** Positive +12 Vdc to provide power to optical, laser, infrared or amplified magnetic sensors. Maximum load is 75 mA dc. Optionally 5 or 24 Vdc supply may be ordered.
- PX+** Positive +12 Vdc supply for use with two-wire proximity sensors. Maximum load for proper operation with two-wire sensors is 25 mA.
- SIG** Positive input signal from the speed sensor. Accepts TTL pulses or ac signals, unipolar and bipolar, from 1.5 Vac to 50 Vac. (Contact the factory for increased sensitivity.) Connect the signal wire from three-wire sensors or the positive side of two-wire magnetic sensors to this terminal. Typical input impedance is 10 kilo ohms.
- COM** Common or Negative connection for both signal and power from most sensors.

Refer to Figure 3 (next page) for connection of Monarch standard sensors. The connections are typical for these types of sensors.



*Figure 3 Sensor Connections*

## 4.0 OUTPUT OPTIONS

The ACT-1B may be equipped with either a Current Output (IO) or an Analog Output (AO), and/or a TTL Pulse Output (PO).

**Note:** Full scale RPM settings must have been specified when ordered or may be user programmed using the optional USB Programming Cable and PM Remote Software.

The Current or Analog Outputs are connected to the terminals in the section labeled **ANALOG OUTPUT OPTION** on the rear panel. The actual output is marked. The Pulse Output is connected to the terminals under the section labeled **OUT** on the rear panel.

**CAUTION:** The IO or AO **COM** may **NOT** be isolated from the other **COM** connections.

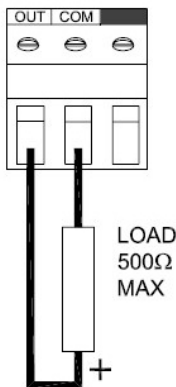
## 4.1 Current Output Option (IO)\*

The current output is 4 to 20 mA. This output is a current source and has a 12 Vdc internal compliance voltage. (Optional 24 Vdc may be ordered).

Typical connections are as follows: (See Figure 4 below.)

Connect the Positive side of the load to the terminal marked OUT and the other (Negative) side of the load to the terminal marked COM.

**Do not use an external voltage supply.**



*Figure 4 Current Output Option Connections*

**Note:** With the internal 12 Vdc compliance voltage, the maximum load for the current loop is 500 ohms.

If the optional 24 Vdc compliance option is ordered, the maximum load will be 1000 ohms.

**\*Note:** A 10-minute warm-up period is required to reach stated specifications.



## 4.2 Analog Output Option (AO)\*

The analog output is 0 to 5 Vdc.

Connect the Positive side of the signal to the terminal marked **OUT**, and the Return side of the signal to the terminal marked **COM**.

**Note:** If your ACT-1B is equipped with either a current output or an analog output, the full-scale output has been factory preset to the speed range specified at the time of purchase. The output range may be programmed using the optional USB Programming Cable and PM Remote Software.

## 4.3 Pulse Repeater Output Option (PO)

The Pulse Repeater output provides a conditioned TTL positive going 5 V pulse out for each pulse in.

Connect the Positive signal wire (+5 V pulse) to terminal marked **+P** and the Return to the terminal marked **COM** in the rear panel section labeled **OUT**.

**Note:** The polarity of the optional pulse output can be set by the user using the optional USB Programming Cable and PM Remote Software.

**\*Note:** A 10-minute warm-up period is required to reach stated specifications.

## 5.0 SPECIFICATIONS

Specifications*	ACT-1B Panel Tachometer
Range	5 to 99,999 RPM
Accuracy	±1 RPM or 0.005% of reading
Resolution	1 RPM (user-programmable to 0.0001+)
Display	5-digit, 0.56" [14 mm] high red LED
Display Update	Twice per second above 120 RPM (user-programmable to 0.5, 1, or 1.5 second+)
Dimensions	1/8 DIN by 4.5" [114 mm] deep
Power Supply	Standard: 100-240 Vac ±10%, 50/60 Hz, 5 VA Optional: 12 or 24 Vdc ±10%, Isolated, 5 Watts
Inputs	Universal input for optical, proximity, two-wire or three-wire magnetic, infrared or laser sensors  TTL input or 2 Vac to 50 Vac peak to peak input  Standard input is 1 pulse per revolution (user-programmable from 1 to 999+)
Sensor Excitation	12 Vdc at 20 mA for proximity sensors, 12 Vdc at 75 mA for all other sensors; Optional 5 or 24 Vdc available  <b>Note:</b> When ordering ACT Series, sensor power supply needs to be verified during product configuration. Contact factory for assistance if needed.
Recommended Sensors	Optical: Monarch ROS-W Proximity: Monarch P5-11 Magnetic: Monarch M-190W or MT-190W Infrared: Monarch IRS-W Laser: Monarch ROLS-W or RLS-W
IO Option	4 to 20 mA out, 15-bit resolution 12 Vdc compliance voltage Full scale RPM settings as specified when ordered (user-programmable+)

Specifications*	ACT-1B Panel Tachometer
<b>AO Option</b>	0 to 5 Vdc out, 5 mA 15-bit resolution Full scale RPM settings as specified when ordered (user-programmable†)
<b>PO Option</b>	0 to 5 V TTL pulse, non-inverting, one pulse out for each pulse in (Positive or negative out programmable†)
This product is designed to be safe for indoor use under the following conditions (per IEC61010-1):	
<b>Installation Category II</b> per IEC 664	
<b>Pollution Degree Level II</b> per IEC 664	
<b>Operating Temperature</b>	32 °F - 122 °F (0 °C - 50 °C)
<b>Humidity</b>	Maximum relative humidity 80% for temperature up to 88 °F (31 °C) decreasing linearly to 50% relative humidity at 104 °F (40 °C)

\*Specifications are subject to change without notice.

†Requires optional USB Programming Cable and PM Remote Software

## 6.0 OPTIONS

<b>IO</b>	4 to 20 mA Current Output
<b>AO</b>	0 to 5 Vdc Analog Output
<b>Note:</b> Full-scale RPM must be specified for the above options when ordering unless the USB Programming Cable with PM Remote Software is ordered as a separate item.	
<b>PO</b>	0 to 5 V TTL compatible Pulse Output <b>Note:</b> Pulses out per revolution equal pulses in per revolution.
<b>CAL-NIST</b>	NIST Traceable Certificate of Calibration (Specify at time of order or request RMA#)

## 7.0 ACCESSORIES

[See Accessories webpage for details.](#)

### USB Programming Cable with PM Remote Software

Download the PM Remote Software from [www.monarchinstrument.com](http://www.monarchinstrument.com). Use the USB Programming Cable and software to change the ACT-1B settings or remotely monitor the RPM.

PN: 6180-031



### Remote Optical Laser Sensors\*\*:

**ROLS-W:** 3.3 to 15 Vdc Power Requirement, 8-ft cable

PN: 6180-030

**ROLS24-W:** 24 Vdc Power Requirement, 8-ft cable

PN: 6180-035

**ROLS24-W-25:** 24 Vdc Power Requirement, 25-ft cable

PN: 6180-035-25



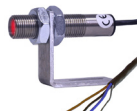
### Remote Optical LED Sensors:

**ROS-W:** 8-ft cable

PN: 6180-056

**ROS-W-25:** 25-ft cable

PN: 6180-056-25



### Remote Optical High Temp Sensor:

**ROS-HT-W-25:** 25-ft cable

PN: 6180-058-25



### Rugged Laser Sensors\*\*:

**RLS-W:** 4 to 15 Vdc Power Requirement,  
detachable 10-ft cable

PN: 6180-080

**RLS24-W:** 10 to 24 Vdc Power Requirement,  
detachable 10-ft cable

PN: 6180-082



## Proximity Sensors:

**P5-11:** 2-wire inductive NAMUR output with 10 ft. cable  
PN: 6180-013



**PS-12:** 3-wire open collector PNP pulse output with 6-ft cable  
PN: 6180-032



## Infrared Sensors:

**IRS-W Sensor:** Infrared Sensor with 8 ft. cable  
PN: 6180-021



**M-190W Sensor:** Magnetic Sensor with 10 ft. cable  
PN: 6180-012



**MT-190W Sensor:** Magnetic Trigger Sensor with amplifier  
PN: 6180-037



**GE200 HP Sensor:** Inductive Sensor with 15 ft. cable  
Requires an amplifier with a wire connection  
PN: 6180-014



**Amplifier for GE200 HP or Magnetic Sensor**  
PN: 4180-406



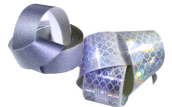
## Reflective Tape:

T-5 (single pack), 5 feet - PN: 6180-070

T-5 (2-pack), 5 feet each - PN: 6180-069

T-50, 50 feet - PN: 6180-072

T-5WP (waterproof), 5 feet - PN: 6180-079



**\*\*Pay close attention to Power Requirement when ordering! Confirm Sensor Power option of ACT configuration matches requirement. Contact Monarch Instrument with any questions.**

## APPENDIX A - Serial Programming Commands

Programming the unit requires the optional USB Programming Cable with associated PM Remote Software and a PC running Windows XP or later with an available USB port.

All serial commands are @ then two or more characters or words separated by a delimiter "/". One or two numbers follow some commands. All valid commands respond immediately with an "OK" or data, or "ERR" if incorrect. Default baud rate is 9600.

Communication requires the USB Programming Cable.

- @PI Product Information, Shows Product name \n Firmware revision \n
- @C2 Shows all settings
- @D0 Sends current display value once
- @D1 Sends display data continuously (at up to display update rate)
- @D2 Stops sending data
- @MX Sends Max reading
- @MN Sends Min reading
- @RE 32 Resets Max
- @RE 64 Resets Min
- @RE 96 Resets Max and Min
- @CH\_A/TYPE Shows current type
- @CH\_A/TYPE = RPM Sets scale to 60 so displays in RPM
- @CH\_A/TYPE = FREQ Sets scale to 1 so displays in hertz
- @CH\_A/TYPE = SCALE Scale mode. Enter Scale factor
- @CH\_A/TYPE/SCALE = 30.00 This will set the SCALE factor to 30.00
- @CH\_A/INPUT Shows sense of the trigger input
- @CH\_A/INPUT = POS (or NEG) Sets the sense of the input trigger
- @CH\_A/LOEND Sets how long (in secs) with no pulses before the tachometer shows 0.

@CH\_A/LOEND = 12 (or 1\_SEC, HALF) Sets low end time. This allows a min reading of 5 RPM, 60 RPM, or 120 RPM

@CH\_A/GATE Shows Gate Speed (default is 12)

@CH\_A/GATE = STD (1/100 Second) or FAST (1/1000 second)  
Sets Gate Speed (default is 1/100)

@DECPT Shows the number of decimal places displayed

@DECPT = NONE, 1, 2, or 3 Sets the maximum number of decimal places

@DAC1/FSCAL Shows Analog Out Full Scale

@DAC1/FSCAL = xxx.xx Sets the Reading value that the Analog output will output Full Scale (5 V or 20 mA) depends on TYPE

@DAC1/OSCAL Shows Analog Out Zero Scale

@DAC1/OSCAL = xxx.xx Sets the Reading value that the Analog output will output Zero Scale (0 V or 4 mA); depends on TYPE (default is 0.00)

@OUTPT Shows pulse output polarity

@OUTPT = POS or NEG Sets pulse output polarity

@DISPR Shows Display Update Rate

@DISPR = HALF or 1\_SEC or 1.5\_S. This sets the maximum display update rate to one half a second, 1 second or 1 ½ seconds between updates

@SERNO Shows unit Serial Number

# Measure • Monitor • Maintain

*Monarch Instrument is committed to excellence and quality in manufacturing, sales, and service.*



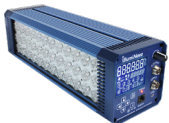
*Portable  
Tachometers*



*Track-It™ Data Loggers*



*Panel Tachometers*



*Fixed Mounted  
Strobes*



*Portable Strobes*



*Frequency  
Converters*



*Speed Sensors*



*DataChart™ Paperless  
Recorders*



**MONARCH**  
INSTRUMENT

15 Columbia Drive, Amherst NH 03031 USA

Tel.: (603) 883-3390 // 800-999-3390

Email: [support@monarchinstrument.com](mailto:support@monarchinstrument.com)

Website: [www.monarchinstrument.com](http://www.monarchinstrument.com)