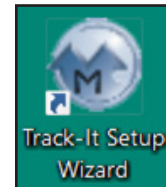


How To

Use Track-It™ Setup Wizard To Setup/Start Recording on Track-It™ USB Data Loggers

The Track-It Setup Wizard is a simple way to start using your Track-It USB data logger. While the **Setup Wizard** has the basics for setting up a Track-It USB data logger, there are more features accessible using the main Track-It Data Logger Software.

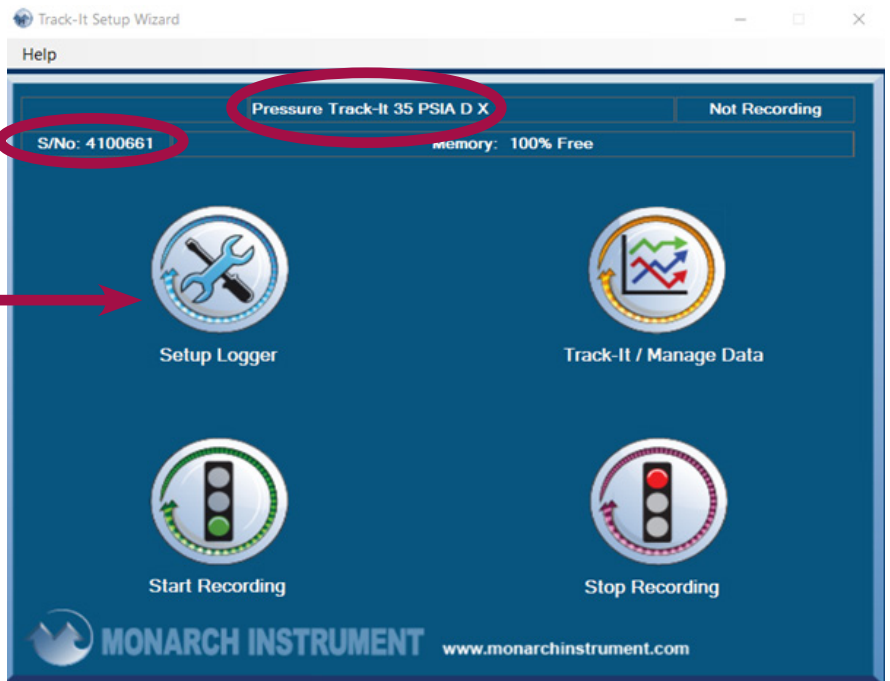
To begin, you must have Monarch's Track-It Software on your computer. The software download is free from Monarch's website. (For a How-To guide on installing the Track-It USB Drivers and software, [click here.](#))



Upon starting the Track-It Setup Wizard, the start screen (below) will appear.

Indicated at the top of the screen is the data logger model and its serial number.

Click on the **Setup Logger** button (top left) to start the set up.



Naming the Data Logger

The Unit Tag is where the user can assign a name to the logger. This is optional.

After naming (or not) the data logger, click **Next**.

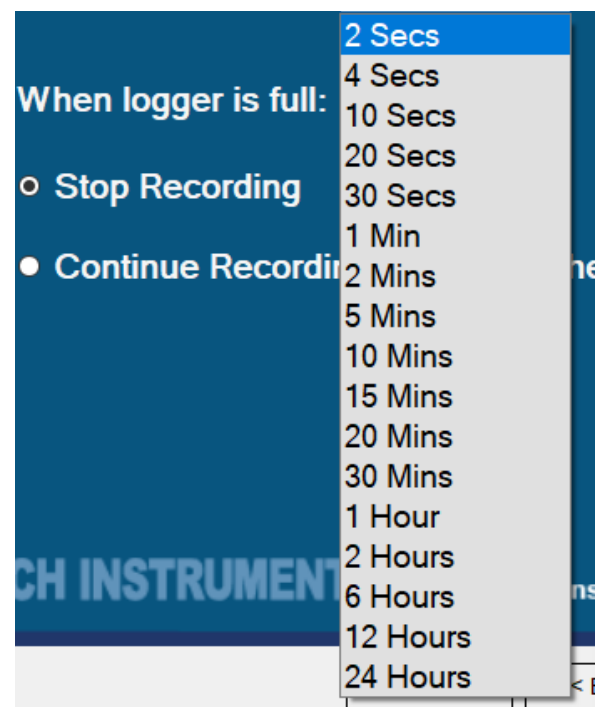


Record Rate

Using the drop-down list, the user has the ability to choose the record rate. The options ranges are in seconds, minutes, or hours.

The user also needs to determine recording stoppage; either stop recording when the data logger is full or continue to record when the data logger is full by overwriting the data.

Once choices are made, click **Next**.

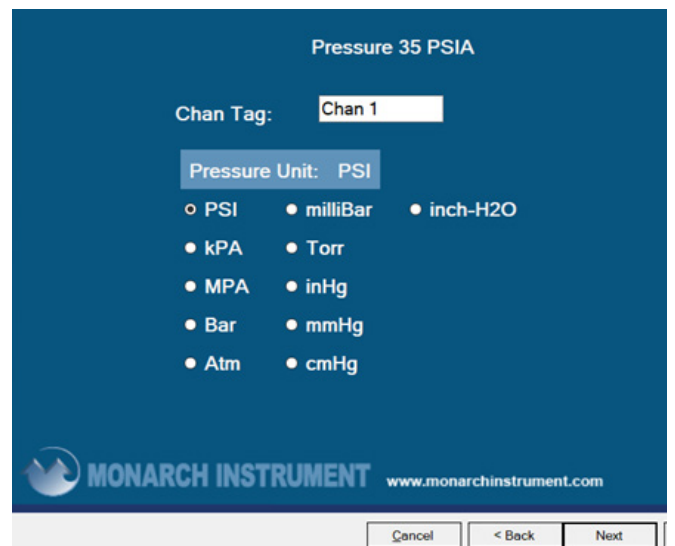


Pressure Units

Since this is a pressure data logger, the user will be given a choice of pressure units.

Note: Most data loggers have two channels but some only have one. Each channel is set up differently.

Once the choice has been made, click **Next**.



How To Use Monarch Setup Wizard to Setup/Start Recording

Recording

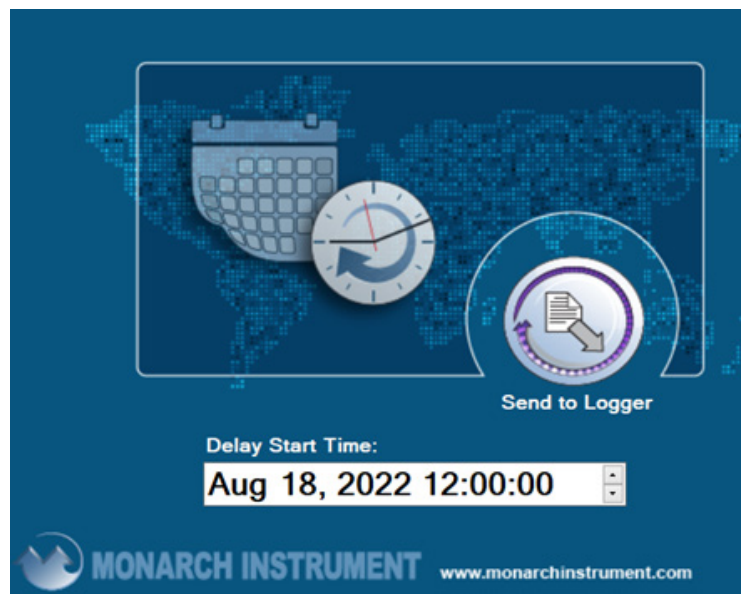
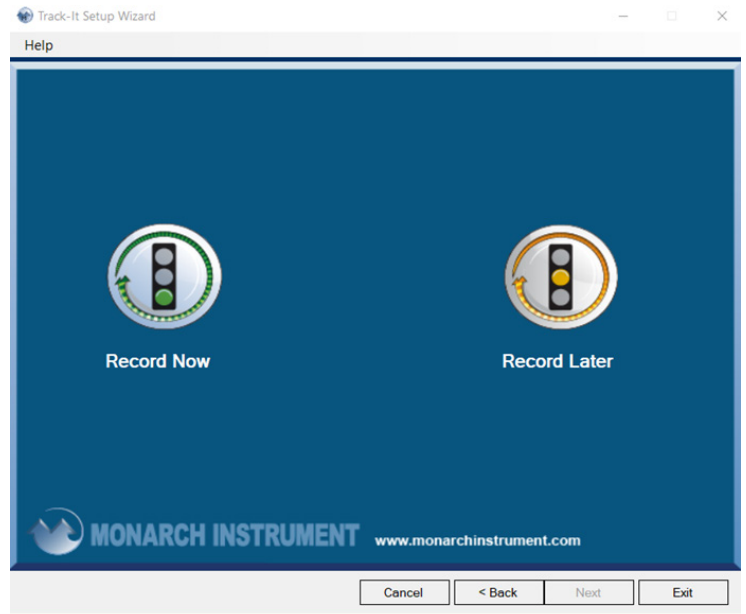
The user has the option to Record Now or Record Later.

Record Now will start the logger recording immediately at the Record Rate. It will also erase any data previously recorded on the logger.

Record Later will allow the user to choose a future start recording time. (See image to the right.)

Clicking the **Send to Logger** button sends the setup configuration to the data logger.

Once successful, the user can click **Exit** or click **New** to setup another data logger.

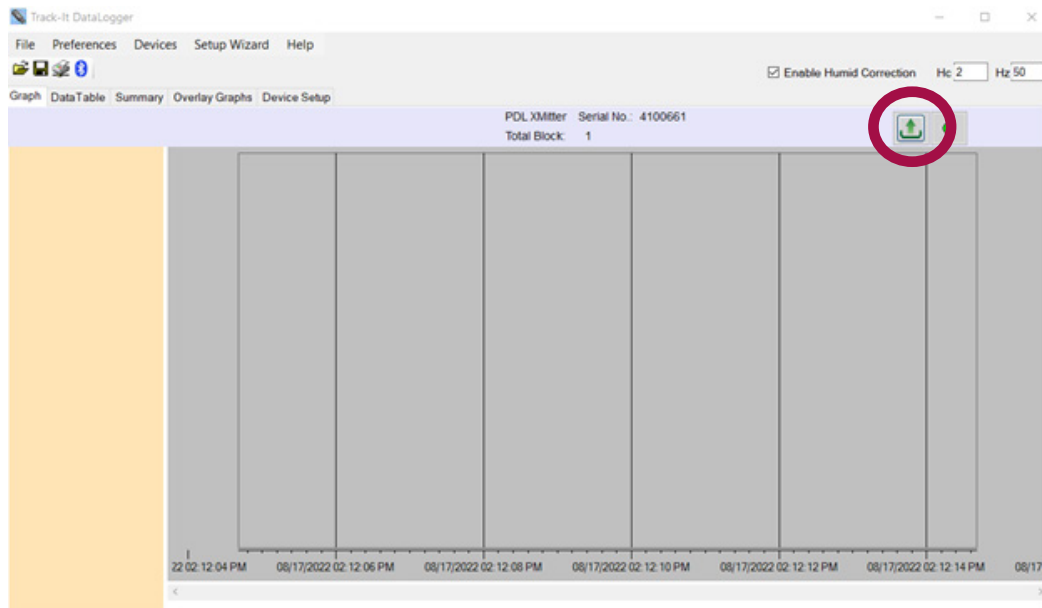



How To Use Monarch Setup Wizard to Setup/Start Recording

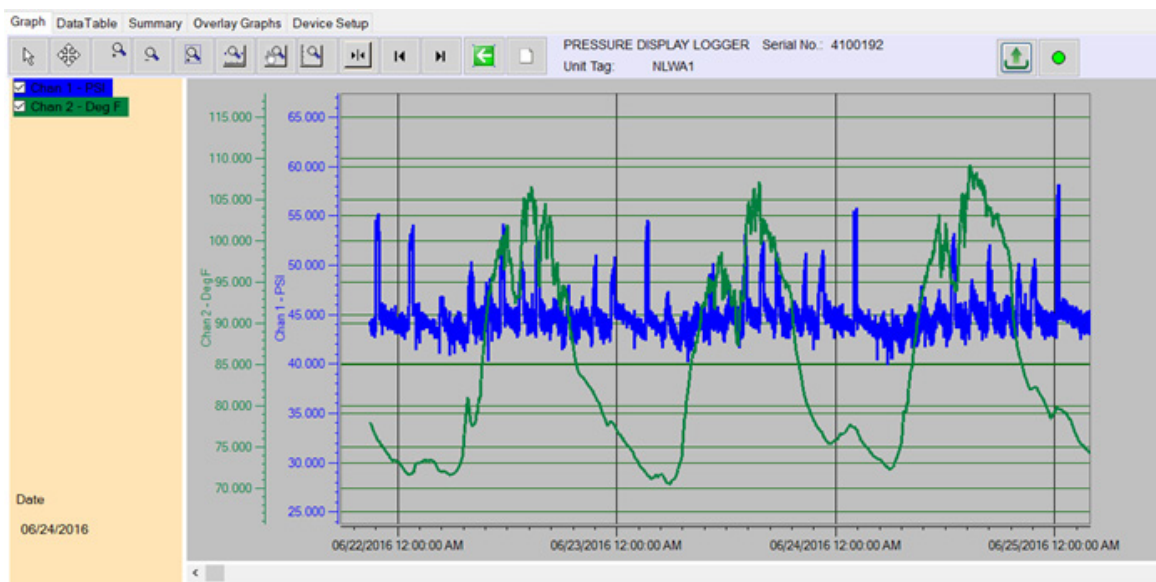
Retrieving Data

To retrieve recorded data, follow these steps.

1. Start the Setup Wizard
2. Click the Track-It/Manage Data located in the upper right. The screen below will appear.



3. Click the upward pointing green arrow  (highlighted in the image above).
4. When prompted, name the data file to be saved. Save the file. Once saved, a data graph will appear (similar to the image below).





Track-It™ Data Loggers



Track-It USBs

[Temperature](#)

[Temp \(w/out display\)](#)

[RH/Temperature](#)

[RH/Temp \(w/out display\)](#)

[Voltage & Current](#)

[Barometric Temperature](#)

[AC Event](#)

Monarch's full line of USB data loggers allows you to easily monitor and track thousands of independent data samples.

Available with or without an LCD, the Track-It lines of Temperature, Barometric/Temperature, and Humidity/Temperature loggers are a must-have for warehouses, museums, pharmaceuticals, laboratories, or any temperature-sensitive area.

Monarch's DC Voltage & Current Data Loggers are two-channel, battery-powered standalone compact data loggers that record up to 32,000 samples each of dc voltage or current data.

Track-It AC Event Data Loggers record up to 64,000 on/off cycles. Use the data logger to monitor cycle patterns of pumps, blowers, and other electrical equipment powered by 120 or 240 V ac.

Browse our full selection to find the Track-It Data Logger that's right for your application.



If you have any questions, you are encouraged to call or email.

[Support](#) 

1-800-999-3390

The Professional's Choice

Monarch Instrument is the world's largest supplier of rotational speed measuring instruments and stroboscopic inspection equipment. Our comprehensive lines of precision products and calibration services make Monarch the professional's choice for tachometers, stroboscopes, speed sensors, data loggers, and data acquisition systems.

Monarch's stroboscopes are precise, rugged, and reliable. That's why Monarch is the professional's choice.

All Monarch products are designed, manufactured, tested, calibrated and serviced in our ISO9001:2015 certified facility.



15 Columbia Drive, Amherst NH 03031
Phone: (603) 883-3390 • Fax: (603) 886-3300
www.monarchinstrument.com