

1 Install USB Driver and Track-It™ Software

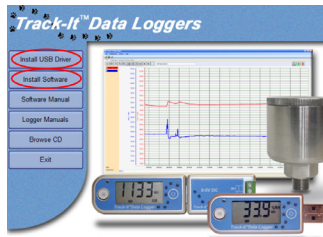
IMPORTANT! Do NOT plug the Track-It™ Data Logger into the USB port until AFTER the USB Drivers and Track-It Software have been installed.

Download Track-It Data Logger Software from:
http://www.monarchinstrument.com/Software/Track-It_Software.zip

Unzip the downloaded file to a local directory on your PC.

Double click **CD_Start.exe**. This will launch the Track-It Data Logger's splash screen (shown below).

1. Click **Install USB Driver** and follow the prompts. Accept any security messages to continue installation.
2. Click **Install Software** and follow the instructions to complete the installation. The software is now installed and ready to use.
3. Logger and software manuals may also be accessed here.



2 Install Data Logger Battery (if necessary)

Install the battery that was supplied with your Track-It Data Logger. Refer to the diagrams below for installation. **Certain models will have battery preinstalled.**

For the **Extreme Temperature Loggers**, see section 4.0 of the product's Instruction Manual.

Remove threaded end cap with coin and insert battery as shown



Rugged Temp
3.6V 1/2AA Lithium
High Temperature

Remove threaded cap and insert battery as shown



Pressure/Temp
3.6V 1/2AA

Remove threaded bezel ring and circular cover on back of logger; insert battery as shown



Pressure/Temp with Display
3.6V 1/2AA

Batteries in thumb drive-type loggers are preinstalled

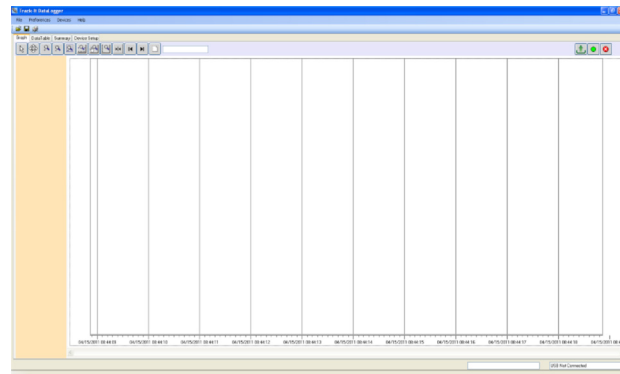


Temp, RH/Temp, DC I/V, AC Event, Baro/Temp
3V CR2032 coin cell or 3.6V EF651625 (LTC-7PN)

3 Connect Data Logger and Track-It™ Software

Plug the Track-It Logger into an available USB port on the PC. Some models plug directly into the USB port; others connect to the USB port with a cable (supplied). If the *Found New Hardware Wizard* appears, follow the prompts to complete the installation.

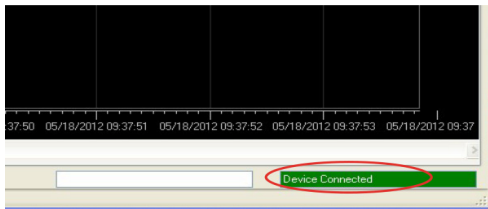
Start the Track-It Software by double clicking the Track-It icon (shown at right) on your PC or from the Start menu.



4

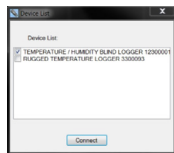
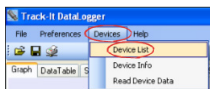
Connect Your Data Logger

If the USB drivers installed properly, you will see *Device Connected* displayed in the lower right-hand corner of the Track-It Software window.



You can now begin using Track-It Software to configure your data logger and/or view recorded data.

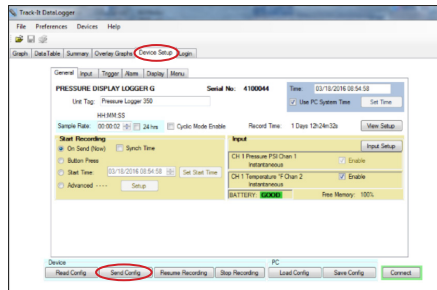
Track-It Software will list all Track-It Data Loggers connected to your PC. To view the list and switch between loggers, click on **Devices** then **Device List**.



5

Configure and Start Logging Data

Select the **Device Setup** tab as shown. The software will automatically retrieve and display the data logger configuration.



Review default factory configuration settings and make any necessary changes - sample rates, triggers, alarms etc. Be sure that the time and date is set properly.

Click the **Send Config** button under the Device Configuration section of the window. **Your data logger is now operational!**



15 Columbia Drive
Amherst, NH 03031

Ph.: 603-883-3390

www.monarchinstrument.com

1071-4396-118 0322



Track-It™



QUICK START GUIDE

Para español, vea el manual al descargar.
Deutsch siehe Handbuch beim Download.
Pour le français, voir le manuel en téléchargement.
Per l'italiano, consultare il manuale al momento del download.