



# MONARCH INSTRUMENT

*the professional's choice*

## Using Windows 7 Internet Explorer to access the DC6000

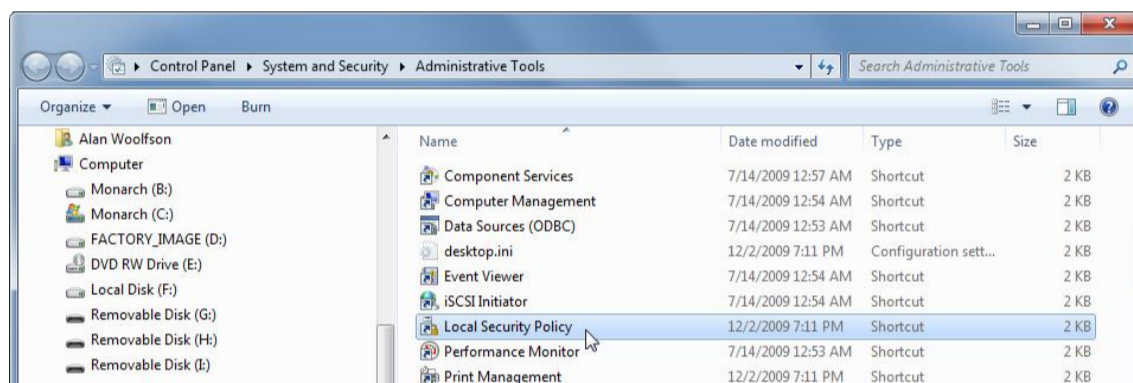
**Applies to:** Windows 7 Professional, Ultimate and Enterprise Editions only.  
See Notes section below for use with Windows 7 Home Premium.

**What:** Enable the Internet Explorer (and other) Browsers to access the DC6000. Default windows installation sets the security so that DC6000 security credentials are blocked.

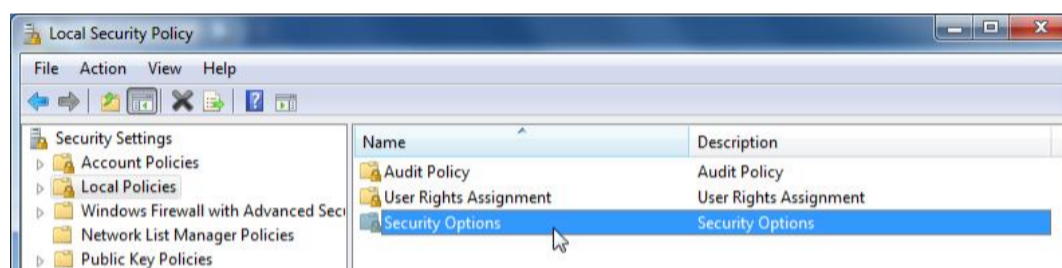
**Symptom:** Continuous requests for user name, password and other credentials when accessing the DC6000 via the browser.

**Solution:** Click on  then Control Panel > System and Security > Administrative Tools.

This will bring up the Administrative Tools Window



Select Local Security Policy from the right pane by double clicking it. This will bring up the window below.



In the left pane select (Click once) Local Policies and then double click Security Options in the right pane.

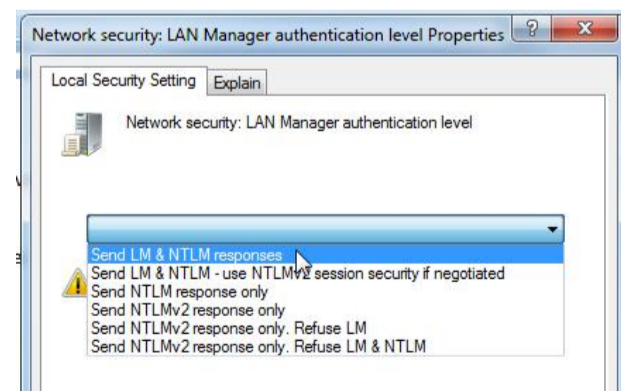
This will repopulate the window. In the right pane - scroll down till you find:

Network security: LAN Manager authentication level Not Defined

Double Click this line to pop up the properties box as shown here. From the drop down menu select Send LM & NTLM responses and then click OK.

Close the windows opened during this exercise. You should now be able to use the browser to connect with the DC6000.

Note: If the LAN Manager authentication level is set at anything other than Not Defined or Send LM & NTLM responses, check with your IT person - it may have been changed for a reason.



**Notes:** Local Security Policy is not available in Windows 7 Home Premium. To use Internet Explorer, you will need to upgrade to Windows 7 Professional or Windows 7 Ultimate.  
As an alternative, Mozilla Firefox works without the need to change any settings (for all Windows 7 versions). This is a free download from Mozilla ([www.mozilla.com](http://www.mozilla.com)).

AJW 1/14/2009