



# MONARCH INSTRUMENT

*the professional's choice*

## New Data Logger Startup:

Install Track-It Software and the USB Drivers using the link in the included Quick Start Guide. A copy of the Quick Start Guide can be obtained from [http://www.monarchinstrument.com/pdfs/Quick\\_Start\\_Guide.pdf](http://www.monarchinstrument.com/pdfs/Quick_Start_Guide.pdf). Make certain the Track-It Data Logger is not plugged into the PC while installing the USB Drivers.

After installing the software, when the Data Logger is plugged into the PC you will see an indication in the lower right hand corner that confirms the connection.

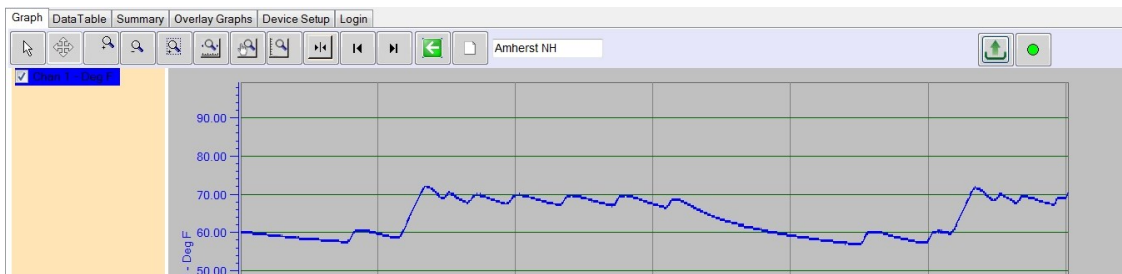
Click the Device Setup Tab and wait a few seconds while the software communicates with the data logger. Set the Sample Rate to your desired interval. Check the box named Use PC System Time, then click Send Config (this may take a few seconds). The Data Logger is recording!

## Retrieving Recorded Data:

Open Track-It Software, plug the Data Logger in, and wait for communication to be established.



From the Graph Tab, click on the Read Device Data button located at the top right of the screen. When you see the Pause Recording dialog box click yes. A second dialog box will appear asking if you want to save the data file to your PC. Click yes and name the file (ex: Room 32B Jan 2017).



Clear the Data Logger and start a new record by clicking the Device Setup Tab, then Send Config.

The complete software users' manual is available from the Help Menu. Data Logger manuals are available at <http://www.monarchinstrument.com/track-it.php>

Technical Support is available by calling 800-999-3390, 603-883-3390, or emailing

[support@monarchinstrument.com](mailto:support@monarchinstrument.com) Our business hours are from 8:30AM to 5:00PM EST.