



MONARCH INSTRUMENT
the professional's choice

DC 2000

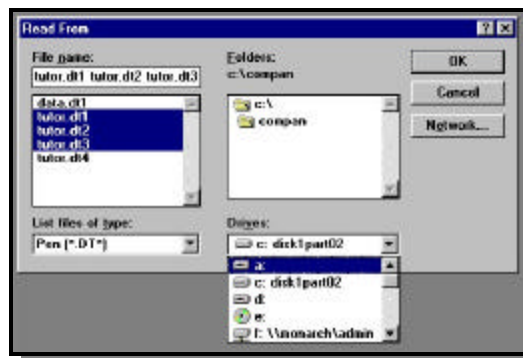
Exporting DataChart Files to Excel

Exporting Data-Chart Files to Excel.

1. Once Companion is running click on the **File** menu and make sure that **Use Disk** is checked off. If it is not click on **Use Disk** and then go back into the **File** menu. Then click on the **Open** menu.

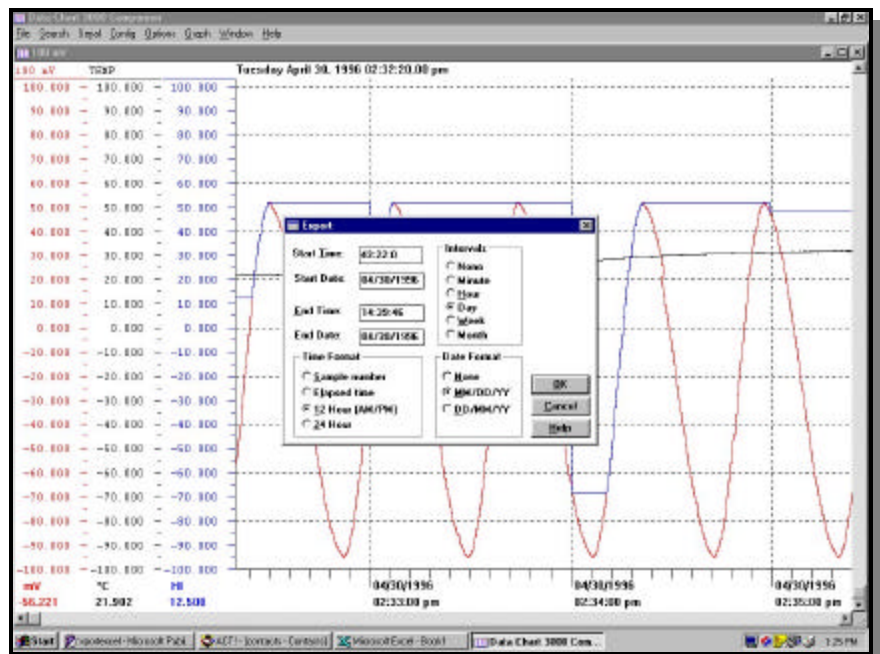


2. Select the drive from which you wish to access the Data-Chart files from (i.e.. a:). Any files located on the **a:** drive will be displayed in the filename dialog box. Select the files that you wish to export by clicking and dragging the cursor over all desired files. Now click **Ok**. The files you selected will be displayed in graphic format on the screen.

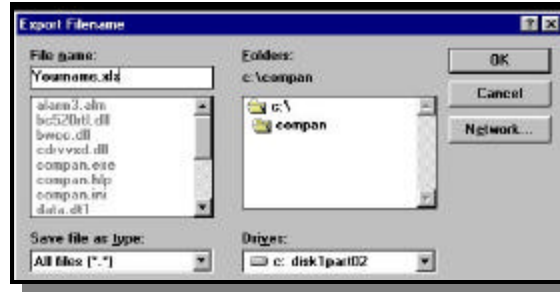


3. Now that the trends are displayed click on the **File** menu then click on the **Export** menu. The export dialog box will be displayed. The program automatically selects all the data in each file. If you want to select a specific time and date period you can do so by changing the time and date range in the respective boxes.

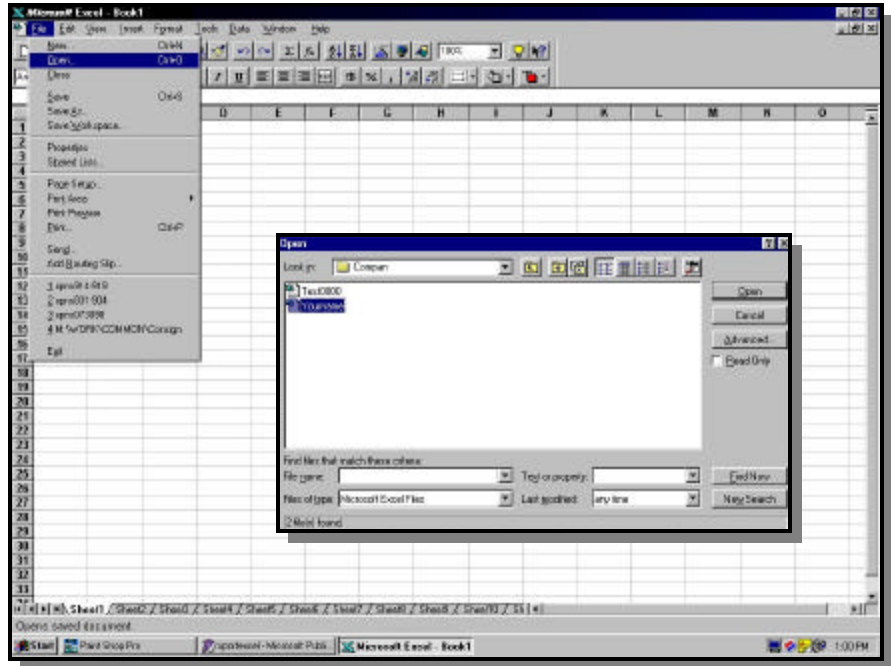
You can also change the interval time. This will create multiple files. This is helpful when file sizes exceed the total number of lines in Excel (65,000+). Once you have selected your export parameters click **Ok**.



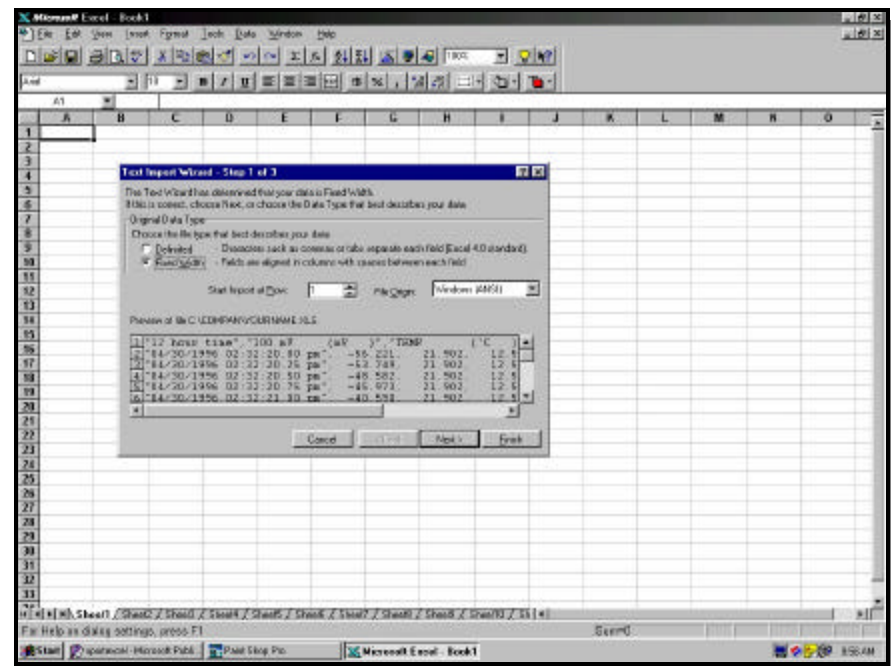
4. Now enter a filename for your export file and add a .xls extension to the name. Select a drive and directory where you want the file to go and click **Ok**. The program will create one importable file containing all of the files you selected. You can now close Companion.



5. Now open Excel and click the **File** menu then click **Open**. The open file dialog box will appear. Locate and click on the .xls file that you created and click **Open**.



6. The **Import Text Wizard step 1 of 3** will now open up and the data that you are importing should be displayed as shown on the right. Make sure that **Fixed Width** is selected and click **Next**.



Microsoft Excel 2003

File Edit View Insert Format Tools Data Window Help

Text Import Wizard - Step 2 of 3

This screen lets you set field widths (column breaks).

Lines with arrows signify a column break.

To CREATE a break line, click at the desired position.

To DELETE a break line, double click on the line.

To MOVE a break line, click and drag it.

Data Preview

	10	20	30	40	50
12	hour	time	m	s	pa
04/09/1996	02:32:20.00	pa	-56.223	21.902	12.501
04/09/1996	02:32:20.25	pa	-62.749	21.902	12.501
04/09/1996	02:32:20.50	pa	-48.582	21.902	12.501
04/09/1996	02:32:20.75	pa	-45.973	21.902	12.501
04/10/1996	02:32:21.00	pa	-40.530	21.902	12.501

Cancel Back Next Finish

Text Import Wizard - Step 2 of 3

This screen lets you set field widths (column breaks).

Lines with arrows signify a column break.

To CREATE a break line, click at the desired position.

To DELETE a break line, double click on the line.

To MOVE a break line, click and drag it.

Data Preview

	10	20	30	40	50
12	hour	time	m	s	pa
04/09/1996	02:32:20.00	pa	-56.223	21.902	12.501
04/09/1996	02:32:20.25	pa	-62.749	21.902	12.501
04/09/1996	02:32:20.50	pa	-48.582	21.902	12.501
04/09/1996	02:32:20.75	pa	-45.973	21.902	12.501
04/10/1996	02:32:21.00	pa	-40.530	21.902	12.501

Cancel Back Next Finish

Test Input Wizard - Step 2 of 3

The screen lets you select each column and set the Data Format.

General converts numeric values to numbers, date values to dates, and all remaining values to text.

Column Data Format

- ☒ General
- ☐ Text
- ☐ Date MM/DD/YYYY
- ☐ Do Not Insert Columns (Skip)

Data Preview

Test	General	General	General	General
12 hour flow = 110 m ³ /s	110	110	110	110
04/20/1998 12:12:20.00 pm	4/20/1998 12:12:20.00	4/20/1998 12:12:20.00	4/20/1998 12:12:20.00	4/20/1998 12:12:20.00
04/20/1998 12:12:20.25 pm	4/20/1998 12:12:20.25	4/20/1998 12:12:20.25	4/20/1998 12:12:20.25	4/20/1998 12:12:20.25
04/20/1998 12:12:20.50 pm	4/20/1998 12:12:20.50	4/20/1998 12:12:20.50	4/20/1998 12:12:20.50	4/20/1998 12:12:20.50
04/20/1998 12:12:20.75 pm	4/20/1998 12:12:20.75	4/20/1998 12:12:20.75	4/20/1998 12:12:20.75	4/20/1998 12:12:20.75
04/20/1998 12:12:21.00 pm	4/20/1998 12:12:21.00	4/20/1998 12:12:21.00	4/20/1998 12:12:21.00	4/20/1998 12:12:21.00

Cancel Back Finish

	A	B	C	D	E	F	G	H	I	J	K	L	M
1	"12 kpt time	100 nV	mV /	TEMP (°C)	P6								
2	"04/30/1996	02 32:20.00 pnt	56.221,	21.902,	12.5								
3	"04/30/1996	02 32:30.25 pnt	53.745,	21.902,	12.5								
4	"04/30/1996	02 32:30.50 pnt	-48.552,	21.902,	12.5								
5	"04/30/1996	02 32:30.75 pnt	-58.975,	21.902,	12.5								
6	"04/30/1996	02 32:21.00 pnt	-40.590,	21.902,	12.5								
7	"04/30/1996	02 32:21.25 pnt	-40.590,	21.902,	12.5								
8	"04/30/1996	02 32:21.50 pnt	-32.561,	21.902,	12.5								
9	"04/30/1996	02 32:21.75 pnt	-32.061,	21.902,	12.5								
10	"04/30/1996	02 32:22.00 pnt	-27.392,	21.902,	12.5								
11	"04/30/1996	02 32:22.25 pnt	-24.610,	21.902,	12.5								
12	"04/30/1996	02 32:22.50 pnt	-18.968,	21.902,	12.5								
13	"04/30/1996	02 32:22.75 pnt	-16.227,	21.902,	12.5								
14	"04/30/1996	02 32:23.00 pnt	-10.881,	21.902,	12.5								
15	"04/30/1996	02 32:23.25 pnt	-10.051,	21.902,	12.5								
16	"04/30/1996	02 32:23.50 pnt	-3.000,	21.902,	12.5								
17	"04/30/1996	02 32:23.75 pnt	-3.000,	21.902,	12.5								
18	"04/30/1996	02 32:24.00 pnt	2.380,	21.902,	12.5								
19	"04/30/1996	02 32:24.25 pnt	4.887,	21.902,	12.5								
20	"04/30/1996	02 32:24.50 pnt	10.144,	21.902,	12.5								
21	"04/30/1996	02 32:24.75 pnt	12.613,	21.902,	12.613								
22	"04/30/1996	02 32:25.00 pnt	17.490,	21.902,	17.49								
23	"04/30/1996	02 32:25.25 pnt	17.490,	21.902,	17.49								
24	"04/30/1996	02 32:25.50 pnt	23.856,	21.902,	23.856								
25	"04/30/1996	02 32:25.75 pnt	23.856,	21.902,	23.856								
26	"04/30/1996	02 32:26.00 pnt	38.116,	21.902,	38.116								
27	"04/30/1996	02 32:26.25 pnt	30.096,	21.902,	30.096								
28	"04/30/1996	02 32:26.50 pnt	33.687,	21.902,	33.687								
29	"04/30/1996	02 32:26.75 pnt	35.629,	21.902,	35.629								
30	"04/30/1996	02 32:27.00 pnt	38.896,	21.902,	38.896								
31	"04/30/1996	02 32:27.25 pnt	38.896,	21.902,	38.896								
32	"04/30/1996	02 32:27.50 pnt	42.826,	21.902,	42.826								
33	"04/30/1996	02 32:27.75 pnt	42.826,	21.902,	42.826								
34	"04/30/1996	02 32:28.00 pnt	45.500,	21.902,	45.500								

PLEASE NOTE: These instructions do not cover all of the methods that may be utilized within Excel. We attempted to show one of the most simplistic. If you have questions please contact us.

	A	B	C	D	E	F	G	H	I	J	K	L	M
1	12:12:12	100 mV	mV	TEMP	°C	F							
2	04/30/1996	02:30:00 pm	56.221	21.902	12.5								
3	04/30/1996	02:30:25 pm	53.745	21.902	12.5								
4	04/30/1996	02:30:50 pm	46.552	21.902	12.5								
5	04/30/1996	02:32:10 pm	48.973	21.902	12.5								
6	04/30/1996	02:32:11 pm	48.973	21.902	12.5								
7	04/30/1996	02:32:21 pm	40.590	21.902	12.5								
8	04/30/1996	02:32:31 pm	32.561	21.902	12.5								
9	04/30/1996	02:32:41 pm	32.561	21.902	12.5								
10	04/30/1996	02:32:51 pm	27.372	21.902	12.5								
11	04/30/1996	02:32:52 pm	24.610	21.902	12.5								
12	04/30/1996	02:32:53 pm	18.966	21.902	12.5								
13	04/30/1996	02:32:53 pm	18.227	21.902	12.5								
14	04/30/1996	02:32:53 pm	10.651	21.902	12.5								
15	04/30/1996	02:32:53 pm	10.051	21.902	12.5								
16	04/30/1996	02:32:53 pm	3.000	21.902	12.5								
17	04/30/1996	02:32:53 pm	3.000	21.902	12.5								
18	04/30/1996	02:32:54 pm	2.390	21.902	12.5								
19	04/30/1996	02:32:54 pm	1.980	21.902	12.5								
20	04/30/1996	02:32:54 pm	10.144	21.902	12.5								
21	04/30/1996	02:32:54 pm	12.613	21.902	12.5								
22	04/30/1996	02:32:55 pm	17.490	21.902	17.49								
23	04/30/1996	02:32:55 pm	17.490	21.902	17.49								
24	04/30/1996	02:32:55 pm	23.856	21.902	23.856								
25	04/30/1996	02:32:55 pm	23.856	21.902	23.856								
26	04/30/1996	02:32:56 pm	38.116	21.902	38.116								
27	04/30/1996	02:32:56 pm	38.086	21.902	38.086								
28	04/30/1996	02:32:56 pm	33.887	21.902	33.887								
29	04/30/1996	02:32:56 pm	35.629	21.902	35.629								
30	04/30/1996	02:32:57 pm	38.896	21.902	38.896								
31	04/30/1996	02:32:57 pm	38.896	21.902	38.896								
32	04/30/1996	02:32:57 pm	42.826	21.902	42.826								
33	04/30/1996	02:32:57 pm	42.826	21.902	42.826								
34	04/30/1996	02:32:58 pm	42.826	21.902	42.826								