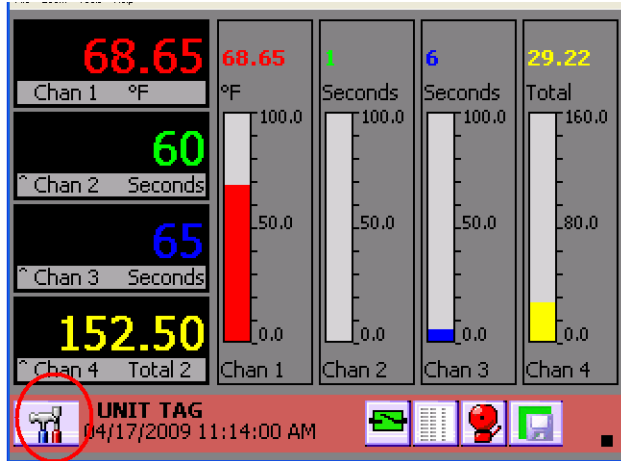




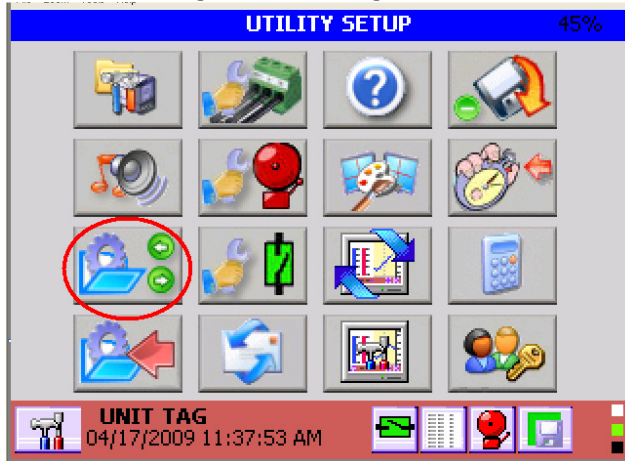
How to save configuration files for the DataChart 6000 Paperless Recorder.

To save the configuration file to a removable storage medium:

Touch the Utility Setup Menu Button:



Touch the Configuration Manager Button:

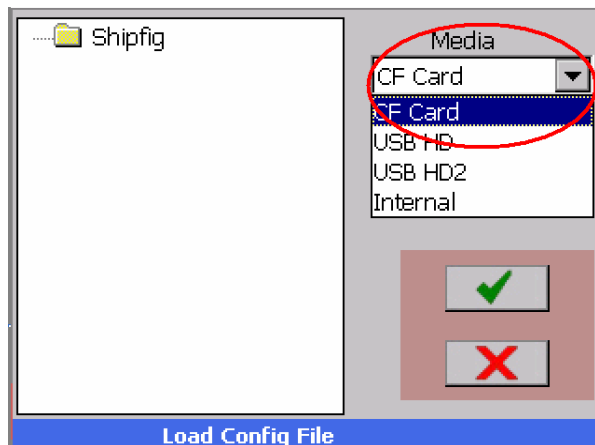


Select the appropriate Media drive from the menu pull-down:



MONARCH INSTRUMENT

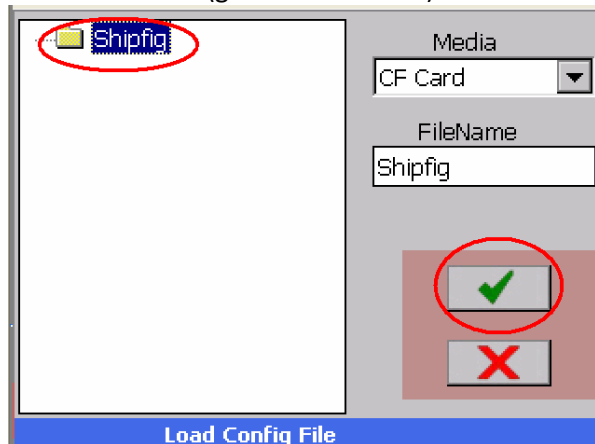
the professional's choice



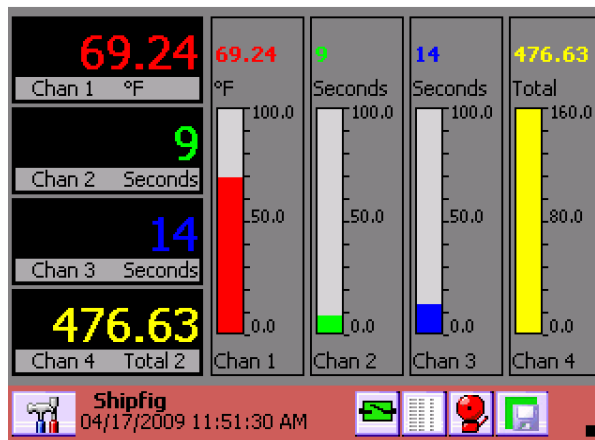
Enter a Filename:

Example: **Shipfig**

Touch the enter (green check mark) button:



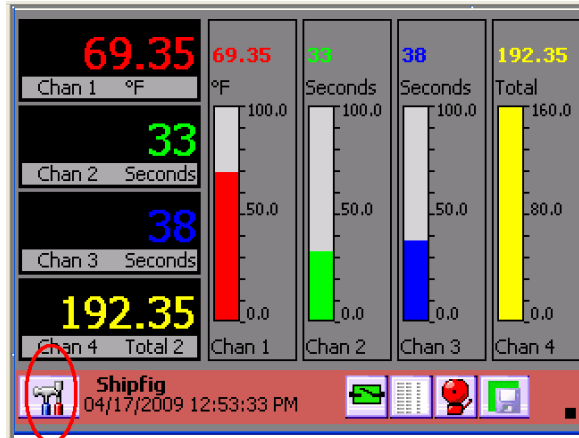
The new configuration file is now saved.



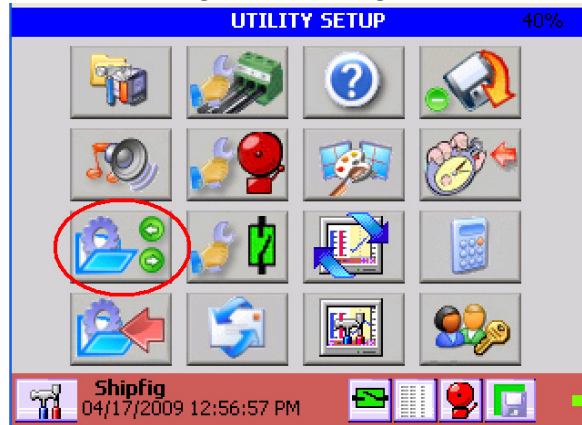


To save the new configuration file to the internal memory:

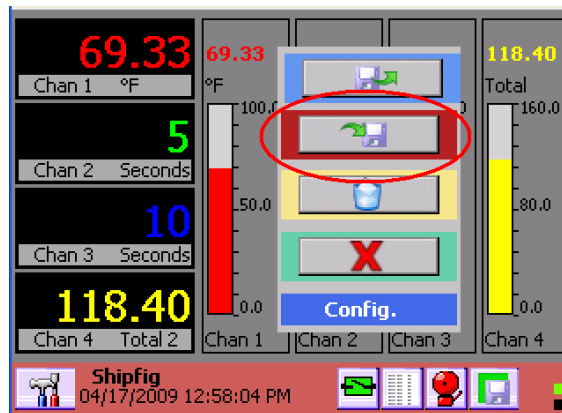
Touch the Utility Setup Menu Button:



Touch the Configuration Manager Button:



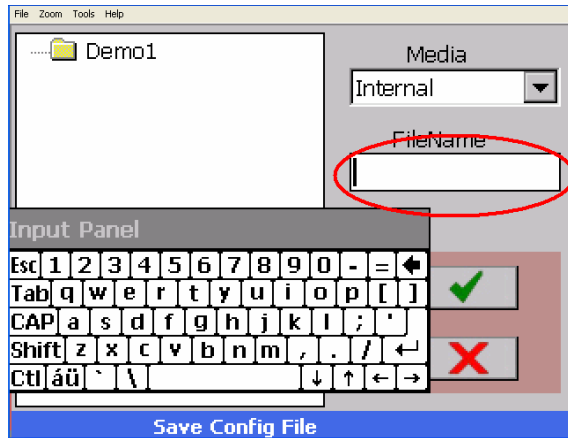
Touch the Save Config File Button:



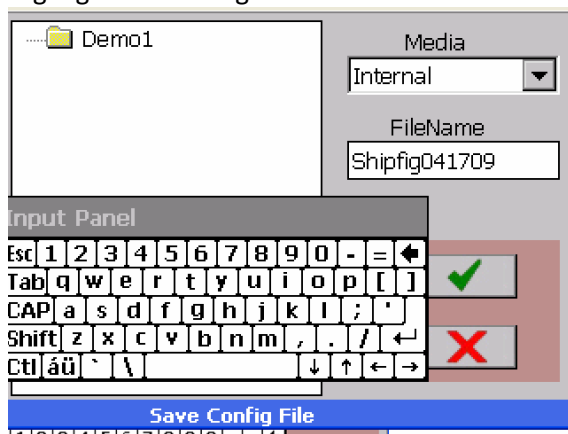
Select "Internal" from the drop down menu.



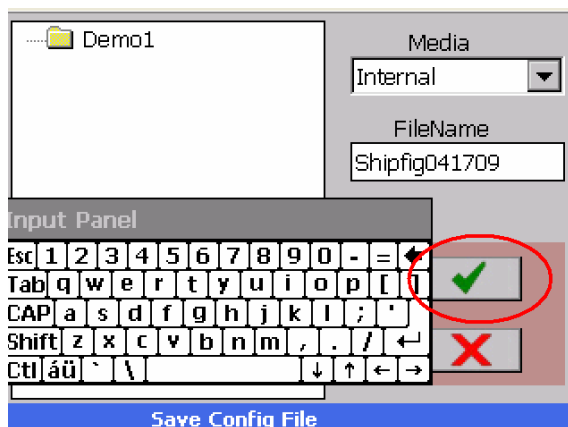
Touch the FileName box. The cursor should appear in the box.



Highlight an existing filename and write over it or use the keyboard to create a new file name.



Touch the green check mark.



The configuration is now saved to the internal memory of the DC6000.



MONARCH INSTRUMENT

the professional's choice

