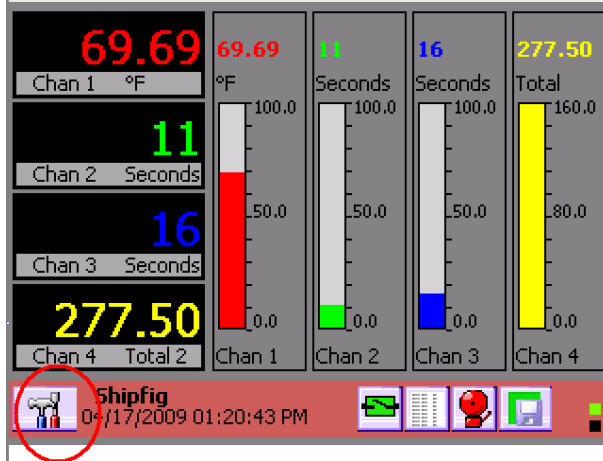


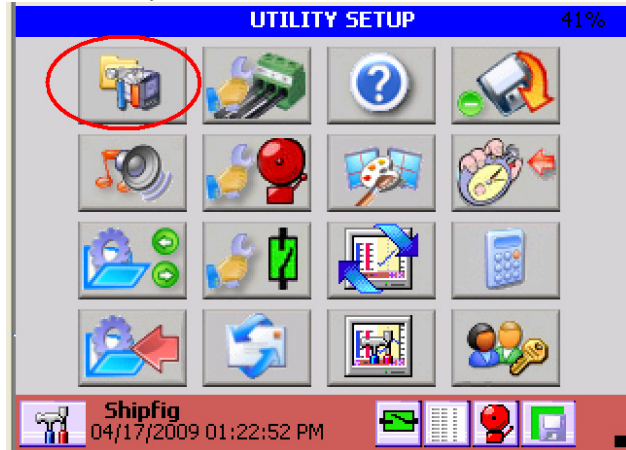


How to enable DC6000 50/60 Hz Noise Rejection

Touch the Utility Setup Menu Button:



Touch the System Admin Menu Button:



Touch the System Setup Button:





Check 50/60 Hz Reject Selection box. (This limits sample rate to 2 per second)

Enable Mouse Pointer
 Enable Config Auto Save
 Enable Pop Up Keyboard
 Enable FTP Server

Unit Tag
MONARCH DC6000
Menu Timeout 120 Seconds

ModBus
ID 1 BaudRate 9600
Timeout 5 Seconds

IP 129.6.15.29
Time Server Enable

50/60 Hz Reject (Limits Sample Rate)

SYSTEM SETUP ?

MONARCH DC6000
03/03/2010 01:39:01 PM

Touch the enter (green check) button.